

ENVIRONMENTAL
SOCIAL
GOVERNANCE

2024



suprabeam®

Danish Design | Swiss Engineering

TABLE OF CONTENT

3 INTRODUCTION

- Policy
- Overall Commitment

4 UN SUSTAINABILITY GOAL

- The Global Goals

6 COMMITMENTS

- Environmental Responsibility
- Innovation and Technological Advancement
- Product Sustainability
- Energy Efficiency
- Waste Reduction and Recycling
- Supplier Engagement
- Employee Engagement and Education
- Compliance
- Target and Goals

8 COMMITTED RECYCLING

- Organisations and Memberships
- National Requirements

10 SUSTAINABILITY REPORTING

- Integrity Next

11 EU COMPLIANCE

- Time line - Compliance

12 DAILY WORK AND EFFORTS

- Fulfilling certifications demands
- Preparing for Digital Product Passport
- Reducing plastic and packaging
- Repairability
- ISO 9001 Certified
- Testing and quality
- Batteries
 - Documentation
 - Protection Circuit



MINIMIZE
IMPACT
suprabeam®
Danish Design | Swiss Engineering

INTRODUCTION

At Suprabeam, we are committed to pioneering the way towards a more sustainable future by leveraging our innovative, technical understanding, and international mindset. We recognize the importance of protecting the environment and strive to minimize our ecological footprint while offering the best portable lighting in the world. Our mission is to provide sustainable lighting solutions that not only meet the needs of our customers but also contribute constructively to minimize waste.

To achieve this, we aim to minimize our environmental footprint and to contribute to the global efforts to address Environmental, Social and Governance (ESG) challenges by following UN 17 international Sustainable Development Goals. Whereas, we have committed us to "Race-to-Zero" Campaign with SME Climate Hub:



By our commitment to the SME climate Hub Suprabeam commits to:

HALVE OUR GREENHOUSE
GAS EMISSIONS BEFORE 2030

ACHIEVE NET ZERO
EMISSIONS BEFORE 2050

DISCLOSE OUR PROGRESS
ON A YEARLY BASIS

Current status and progress on our commitments will be disclosed in this folder and in future environmental and sustainability status publications.



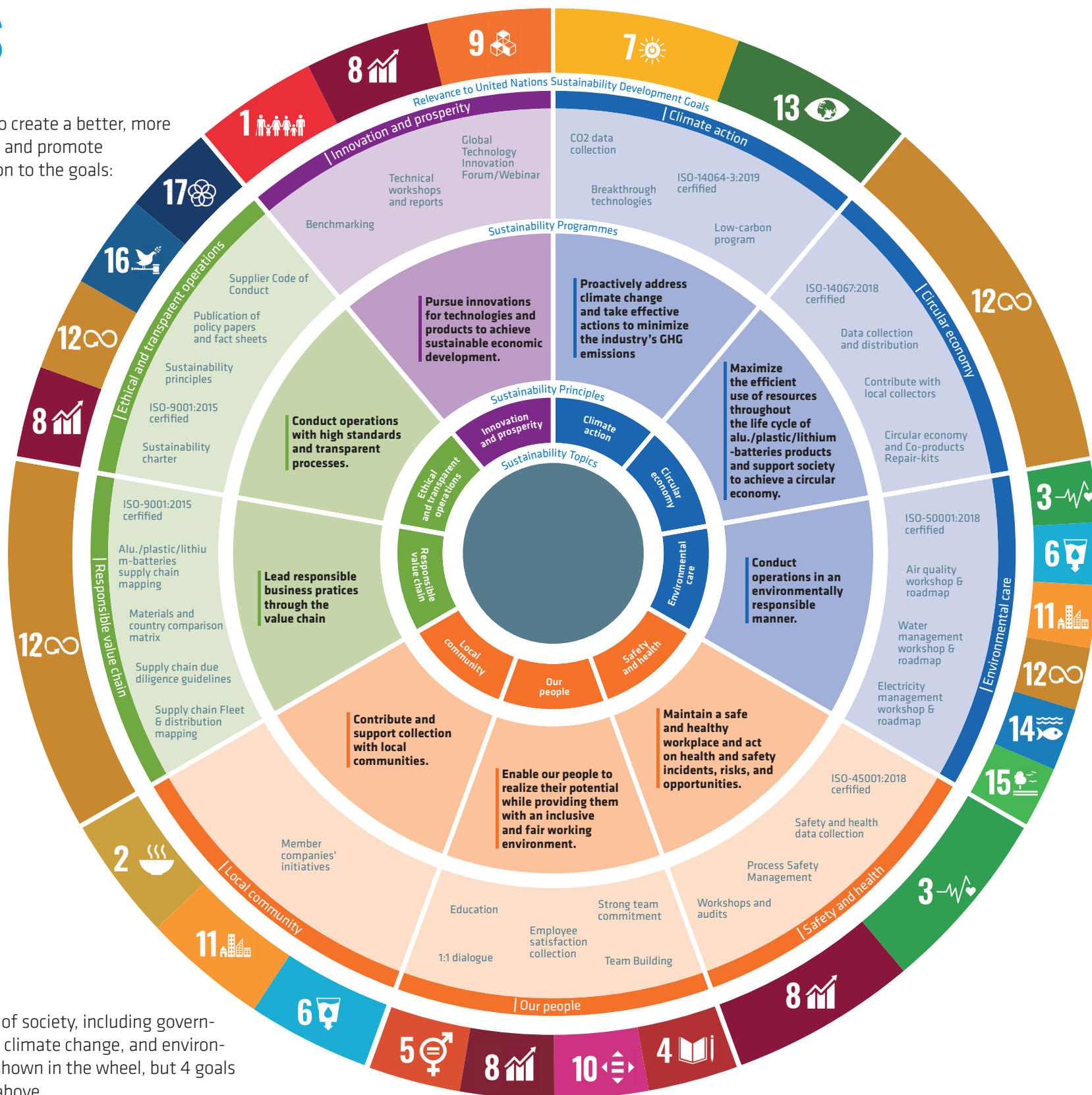
SUSTAINABLE DEVELOPMENT GOALS

SUPRABEAM AND THE GLOBAL GOALS FROM UN

The United Nations' Sustainable Development Goals (SDGs), aim to create a better, more sustainable future by 2030. The 17 goals address global challenges and promote prosperity while protecting the planet. Here below brief introduction to the goals:

- 
No Poverty: End extreme poverty globally.
- 
Zero Hunger: Achieve food security and improved nutrition.
- 
Good Health and Well-being: Ensure healthy lives and promote well-being.
- 
Quality Education: Provide inclusive, equitable quality education.
- 
Gender Equality: Achieve gender equality and empower all women and girls.
- 
Clean Water and Sanitation: Ensure sustainable water and sanitation for all.
- 
Affordable and Clean Energy: Provide access to sustainable energy for all.
- 
Decent Work and Economic Growth: Promote sustained, inclusive economic growth.
- 
Industry, Innovation, and Infrastructure: Promote sustainable industrialization.
- 
Reduced Inequality: Reduce inequality within and among countries.
- 
Sustainable Cities and Communities: Make cities inclusive, safe, and sustainable.
- 
Responsible Consumption and Production: Ensure sustainable consumption and production.
- 
Climate Action: Combat climate change and its impacts.
- 
Life Below Water: Conserve oceans and marine resources.
- 
Life on Land: Sustainability manage forests, combat desertification, and halt biodiversity loss.
- 
Peace, Justice, and Strong Institutions: Promote peaceful, inclusive societies and justice.
- 
Partnerships for the Goals: Strengthen global partnerships for sustainable development.

These interconnected goals require collaboration across all sectors of society, including governments, businesses, and civil society, to address poverty, inequality, climate change, and environmental degradation. At Suprabeam all goals will be worked on as shown in the wheel, but 4 goals will have the main focus in the coming years, see them marked above.



4 goals marked above: 5 (Gender Equality), 8 (Decent Work and Economic Growth), 10 (Reduced Inequalities), and 4 (Quality Education).

COMMITMENTS

Suprabeams work to fulfil our sustainability goals means that we will tightly monitor how products, services, and operations within Suprabeam and across our supply chain will perform and how they can be improved compared to base year 2018. We integrate our environmental and social considerations into our everyday practices and make a positive contribution to society. It involves all employees, contractors, suppliers, and stakeholders of Suprabeam. It encompasses all operations, activities, and processes carried out by the organization, including but not limited to manufacturing, procurement, transportation, energy use and waste management.

Environmental Responsibility

We are dedicated to minimizing the environmental impact with 50 % by 2030 in our operations, products, and services. We strive to conserve natural resources, prevent pollution, and reduce waste generation at every stage of our value chain.

Innovation and Technological Advancement

We commit to continuously research, develop, and improve our products and processes to incorporate the latest advancements in sustainable technology. We aim to create innovative lighting solutions that are energy-efficient, long-lasting.

Product Sustainability

Accelerate our efforts in designing and manufacturing with highest quality for maximum sustainability in mind. Our portable lights are built to last, ensuring longevity and reducing the need for frequent replacements. We prioritize energy efficiency, recyclability, and the use of eco-friendly materials in their production. We provide repair and exchange of parts to further extend the lifetime of our lights.



Suprabeam **100%** cardboard packaging totally free from plastic and reusable.



Energy Efficiency

We encourage energy efficiency within our organization by implementing energy-efficient practices, optimizing energy consumption in our facilities. All electricity used at our European offices comes from **renewable energy** sources



Waste Reduction and Recycling: We strive to minimize waste generation; we promote recycling and responsible waste management practices. This includes reducing packaging waste, recycling materials whenever possible, and working with suppliers who share our commitment to waste reduction.



Supplier Engagement

We collaborate with our suppliers to ensure they align with our sustainability objectives. We encourage them to adopt environmentally responsible practices, source sustainable materials, and comply with applicable environmental regulations.



Employee Engagement and Education

We empower our employees to actively participate in our sustainability efforts. We provide training and education on environmental practices, encourage eco-conscious behaviours in the workplace, and foster a culture of sustainability throughout our organization.

TARGET AND GOALS

Environmental

- Achieve a 100% plastic free packaging.
- 20% reduction in transport emissions.

Energy Efficiency

- Reduce energy consumption with 15% within the next three years.

Waste Reduction

- 20% reduction in land-field waste.
- 80% increase in reuse of packaging.

Product Sustainability

- Improve product design and life cycle to reduce 15% on environmental impact.

TARGETS AND GOALS

Here presented is a selected range of the target and goals set by Suprabeam to focus and work on in the coming years.



COMMITTED

RECYCLING

MEMBER OF



ELRETUR

2023

REUSE, RECYCLE

MEMBER OF



ELRETUR

2023

REUSE, RECYCLE

MEMBER OF ELRETUR

As part of "ELRETUR" Suprabeam fulfills our obligation as a electronic manufacturer to safely collect and reuse the electronic parts of our products. The membership of ELRETUR is ensuring that Suprabeam fulfills manufacture responsibility obligations, collecting electronics and batteries through ELRETUR. As part of the membership Suprabeam has committed to report data to the authorities, required under the extended producer responsibility.

Suprabeam takes responsibility for our products when they reach end-of-life. Through our membership, Suprabeam contributes to more and better recycling and reuse of electronics and batteries.

Certifikat
2024
Produktör | WEEE
Certificate

SUPRABEAM Sverige AB

Företaget är anslutet till
El-Kretsen Sverige AB och följer
direktivet för avfallning SFS 2002:1276
om miljöansvar för
elektronik.

El-Kretsen driver ett samarbets-
nätverk och garanterar
att insamlade produkter och
avfall korrekt avfallas och
återvinns enligt gällande lagar.

The company is affiliated to
El-Kretsen Sverige AB and is
implementing the ordinance
SFS 2002:1276 regarding electrical
and electronic products.

El-Kretsen is the business sectors
service company for the collection
and recycling of electrical and
electronic products, and guarantees
that the collected and treated electrical
and electronic products are
recycled correctly according to the
ordinance.

El-Kretsen

Certifikat
2024
Batterier | Batteries
Certificate

SUPRABEAM Sverige AB

Företaget är anslutet till
El-Kretsen Sverige AB och följer
direktivet för avfallning SFS 2002:1276
om miljöansvar för
batterier.

El-Kretsen driver ett samarbets-
nätverk och garanterar
att insamlade batterier
korrekt avfallas och återvinns
enligt gällande lagar.

The company is affiliated to
El-Kretsen Sverige AB and is
implementing the ordinance
SFS 2002:1276 regarding producer
responsibility for batteries.

El-Kretsen is the business sectors
service company for the collection
and recycling of electrical and
batteries, and guarantees that the
collected batteries are recycled
correctly according to the ordinance.

El-Kretsen

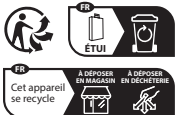
MEMBER OF EL-Kretsen

In Sweden Suprabeam is a member of EL-Kretsen in order to fulfill our obligations as a manufacturer in regard to electronic and battery waste management.

El-Kretsen is the business sectors service company for the collection and recycling of electrical and electronic products, and guarantees that the collected and treated electrical and electronic products are recycled correctly according to the ordinance.



Bebat battery waste handling



Triman marking France

WEEE LABEL

The symbol found on every Suprabeam packaging, indicates that the product should not be discarded as unsorted waste but must be sent to separate collection facilities for recovery and recycling.



NATIONAL REQUIREMENTS

As an international company selling on many markets across the world, Suprabeam takes part and fulfill national requirements in regard to waste handling of electronics, batteries and packaging material. Suprabeam is committed to reduce environmental impact and promotes recycling and reuse where possible.

SUSTAINABILITY PROFILE

Analysis of a supplier with focus on compliance with regulatory requirements and sustainability standards.



Steiner A / S

Dyssen 3
8200 Aarhus N
Denmark

D-U-N-S® number: 306761953
www.suprabeam.com

Assessment Result

represents the overall result of the supplier's self-assessment
Last Update: 2023-02-28

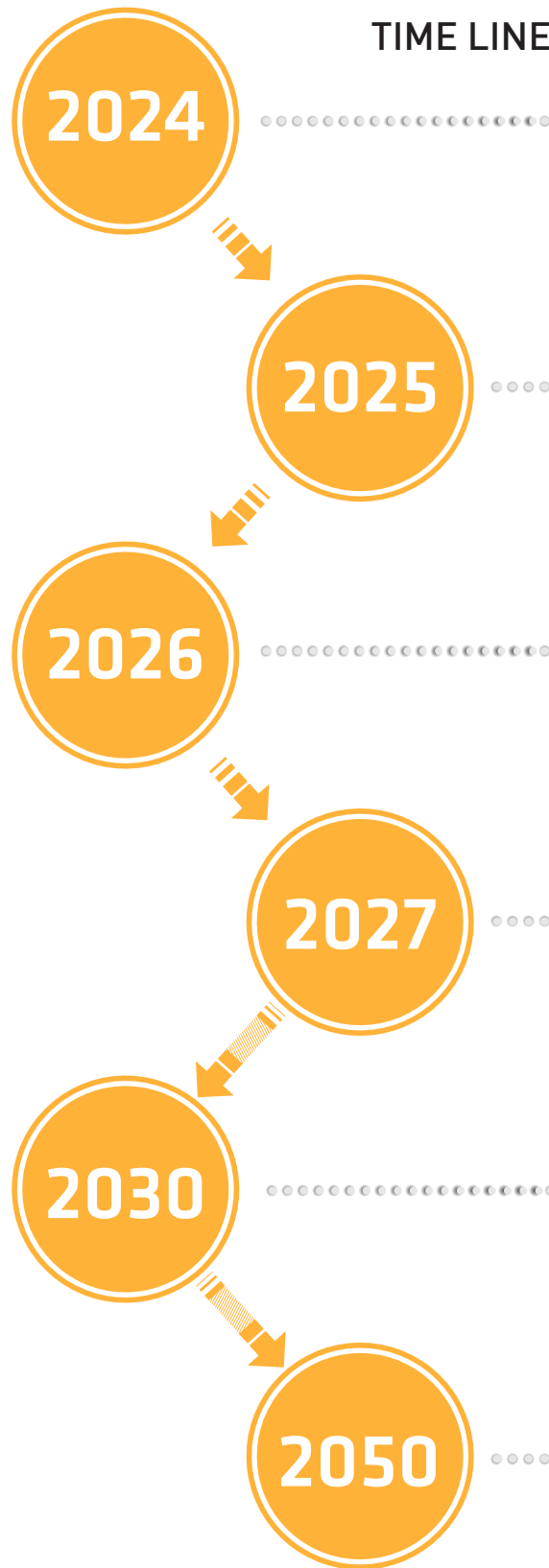


To ensure transparent Environmental, Social, Governance (ESG) reporting Suprabeam has chosen to partner up with the German company INTEGRITY NEXT. As a third-party provider they enable Suprabeam helps to stay on top of the ever changing and demanding reporting landscape. Allowing to collect supply chain data across all relevant sustainability topics, identify gaps and ultimately improve KPIs. Based on 30 supply chain metrics and more than 90 data points, Suprabeam obtain a comprehensive and GRI-certified report for your disclosures.

Here displayed the latest assessment of Suprabeam in terms of reaching and fulfilling ESG goals as a company. It is with pride that Suprabeam can show that we are and have been working with taking responsible for our impact as a company and currently ranking high on all parameters. This does not mean that the work is done as new regulations and demands are coming each year with increasing demands to reduce environmental and Social impacts.

Human Rights & Labour	Environmental Protection	Supply Chain Responsibility	Anti-Bribery & Anti-Corruption	Conflict Minerals	Health & Safety

TIME LINE — COMPLIANCE



Packaging TAX

All single use plastic introduced in the marketplace as part of packaging will be taxed to encourage to phase out single use plastic wherever possible. For Suprabeam this means no more plastic in packagings at all.

Empowering Consumers Directive

Implementing strict rules within EU about how sustainability efforts can be marketed. Stricter rules on repair-ability and the ability to do so.

Substantiating Green Claims

Requirements for proof on green claims are implemented. Digital Product Passport (DPP) is implemented. DPP is documentation on the entire supply chain, all materials and process required to manufacture a given product.

REACH - PFAS Restrictions

Stricter demands on the use of chemicals and especially PFAS. The use of PFAS will be banned completely in products where the use is not essential.

Reduced GHG with 55%

In 2030 greenhouse gas emissions has to be reduced by at least 55%. All companies has to have a sustainability policy.

ZERO net GHG Emissions

By 2050 all companies within the EU has to have a ZERO net emission of greenhouse gases covering all activities within the company.

EU LEGISLATION

30 new laws and legislation within 2028.

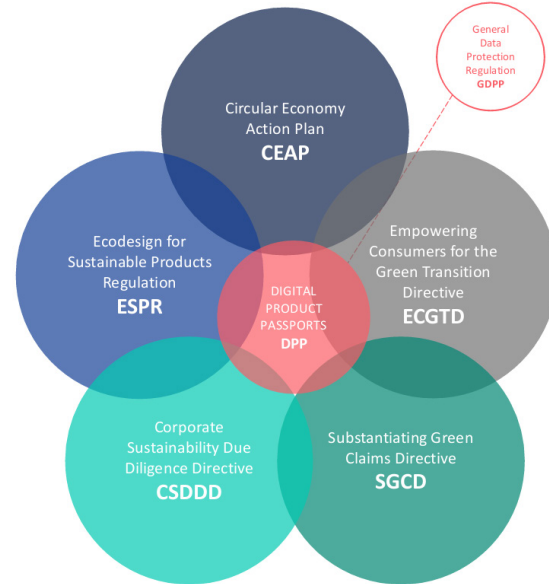
DAILY WORK & EFFORTS

Fulfilling certification demands

Suprabeam meticulously meets all certification and compliance requirements for every market where their products are sold. This rigorous adherence to standards ensures safety, quality, and reliability, distinguishing them from many competitors. Unlike cheaper products flooding consumer marketplaces globally, which often lack proper certifications, Suprabeam's commitment to compliance guarantees that their products are thoroughly tested and approved according to international regulations. This dedication to meeting high standards not only enhances customer trust but also reinforces Suprabeam's reputation for excellence and responsibility in the industry.



Digital Product Passport



Preparing for Digital Product Passport (DPP)

Suprabeam is innovating by introducing QR codes directly on their products, allowing customers to instantly access detailed product information, production data, article numbers, manuals, and spare parts. This user-friendly feature enhances customer experience and product transparency. Additionally, it marks Suprabeam's first step towards the upcoming Digital Product Passport (DPP) initiative. The DPP aims to provide comprehensive data on each product's supply chain and environmental impact, promoting transparency and sustainability. By preparing for the DPP, Suprabeam is ensuring that customers will soon be able to trace the entire lifecycle of a product, from raw materials to disposal, thus making informed, eco-conscious purchasing decisions. This forward-thinking approach not only aligns with future regulatory requirements but also underscores Suprabeam's commitment to sustainability and innovation in the marketplace.

44% SMALLER PACKAGING

100% PLASTIC FREE



Reducing plastic and packaging size

Suprabeam is actively reducing packaging sizes to minimize shipping volume and costs. By optimizing the dimensions of their packages, they can ship more units in fewer shipments, leading to cost savings and reducing environmental impact. Additionally, Suprabeam ensures that all their packaging is 100% plastic-free and fully recyclable, underscoring their commitment to sustainability. This eco-friendly approach not only decreases waste but also aligns with global efforts to reduce plastic pollution. Through these initiatives, Suprabeam demonstrates a strong dedication to environmental responsibility while enhancing operational efficiency.

Repeatability

At Suprabeam, we believe in repairing, not discarding, perfectly good products due to a single broken part. Our lights are designed for long-term use, but accidents happen. Repairing instead of replacing benefits the environment and your wallet. This sustainable approach is integral to the premium service you receive with Suprabeam lights. We aim to keep spare parts for all our products, including older and discontinued models, in stock. If a needed part is unavailable, we will provide an alternative solution. By choosing repair over replacement, you help reduce environmental impact and support sustainability.





ISO 9001 certified

Suprabeam's factory in China is ISO 9001 certified by SGS, reflecting its adherence to international quality management standards. This certification ensures consistent product quality, efficient processes, and continuous improvement. Being ISO 9001 certified by SGS, a globally recognized certification body, underscores Suprabeam's commitment to excellence and reliability. Its procedures, and a strong focus on customer satisfaction. This certification assures customers that Suprabeam products are manufactured to the highest standards, reinforcing trust and confidence in their brand's dedication to delivering superior performance and quality.

BATTERIES

Documentation

For every single battery produced and delivered, Suprabeam ensures that all test and regulations are followed and supplies needed documentation for shipping. Tests performed on each battery includes:

- Thermal
- Vibration
- Shock
- Short Circuit
- Overcharge
- Impact
- Forced Discharge
- etc.



TEST - MANAGEMENT - QUALITY



Testing and quality

Suprabeam rigorously tests every product before shipping to ensure the highest quality and performance. Each item undergoes 3-5 cycles of charging and discharging to verify battery integrity and functionality. Additionally, upon arrival at the Danish warehouse, 3% of all batches are meticulously inspected to maintain consistency. Every batch also undergoes lumen and runtime tests to confirm that the products meet Suprabeam's stringent standards. These thorough testing procedures ensure that each Suprabeam product performs optimally and reliably. By implementing such comprehensive quality control measures, Suprabeam guarantees that customers receive top-tier, dependable products every time.



Protection circuit

All Suprabeam batteries have a protective circuit installed, these are crucial for lithium batteries as they prevent overcharging, over-discharging, and short circuits, which can lead to overheating, fires, or explosions. Protective circuits ensure the battery operates within safe limits, enhancing longevity and performance. Protective circuits safeguard both the battery and the connected device, providing reliable and safe power management essential for modern electronic devices.

SAFE
RELIABLE
QUALITY