

MODULAR BUILT

All of our products are **modular built**, which makes it easy for you to replace **spareparts**, in the unlikely event, that something should brake.

HEAT SINK

All of our products are designed with **heat-sink** providing:

- **Maximum output**
- **Efficient thermal management**
- **Low power consumption**
- **Long-life operation**

Our Power LEDs are mounted with “heat-sink”. This ensures a perfect user experience every single time you use it. The **special designed** LED takes advantage of the entire device by diverting the heat throughout the core structure. You will therefore be able to get **maximum output** for a much longer period of time.

COOLING CORE

The torches in the Suprabeam product range are all designed with a firm grip and **cooling core** structure. The core structure is made of anodized high strength aluminium. This provides a firm grip and cooperates with the “heat-sink” to cool off the LED.

DURABLE SWITCH

The **switch** is covered with a high quality solid silicone or aluminium button, which makes it **extremely durable**. The switch is the most common thing to fail on torches. That is why we choose a high quality switch, which is tested to run for at least **20,000 operations**. Combined with the solid silicone of aluminium button, we have created the greatest and most durable solution ever seen in a torch

At SUPRABEAM, we are committed to pioneering the way towards a more sustainable future by leveraging our innovative, technical understanding, and international mindset. We recognize the importance of protecting the environment and strive to minimize our ecological footªprint while offering the best portable lighting in the world. Our mission is to provide sustainable lighting solutions that not only meet the needs of our customers but also contribute constructively to minimize waste.



SUPRABEAM AND THE GLOBAL GOALS FROM UN

The United Nations' Sustainable Development Goals (SDGs), aim to create a better, more sustainable future by 2030. The 17 goals address global challenges and promote prosperity while protecting the planet. Here below brief introduction to the goals:

| | |
|---|---|
| 1 No Poverty: End extreme poverty globally. | 2 Zero Hunger: Achieve food security and improved nutrition. |
| 3 Good Health and Well-being: Ensure healthy lives and promote well-being. | 4 Quality Education: Provide inclusive, equitable quality education. |
| 5 Gender Equality: Achieve gender equality and empower all women and girls. | 6 Clean Water and Sanitation: Ensure sustainable water and sanitation for all. |
| 7 Affordable and Clean Energy: Provide access to sustainable energy for all. | 8 Decent Work and Economic Growth: Promote sustained, inclusive economic growth. |
| 9 Industry, Innovation, and Infrastructure: Promote sustainable industrialization. | 10 Reduced Inequality: Reduce inequality within and among countries. |
| 11 Sustainable Cities and Communities: Make cities inclusive, safe, and sustainable. | 12 Responsible Consumption and Production: Ensure sustainable consumption and production. |
| 13 Climate Action: Combat climate change and its impacts. | 14 Life Below Water: Conserve oceans and marine resources. |
| 15 Life on Land: Sustainably manage forests, combat desertification, and halt biodiversity loss. | 16 Peace, Justice, and Strong Institutions: Promote peaceful, inclusive societies and justice. |
| 17 Partnerships for the Goals: Strengthen global partnerships for sustainable development. | |

These interconnected goals require collaboration across all sectors of society, including governments, businesses, and civil society, to address poverty, inequality, climate change, and environmental degradation. At Suprabeam all goals will be worked on as shown in the wheel, but 4 goals will have the main focus in the coming years, see them marked above.



By our commitment to the SME climate Hub Suprabeam commits to:

- HALVE OUR GREENHOUSE GAS EMISSIONS BEFORE 2030
- ACHIEVE NET ZERO EMISSIONS BEFORE 2050
- DISCLOSE OUR PROGRESS ON A YEARLY BASIS

Distributor:

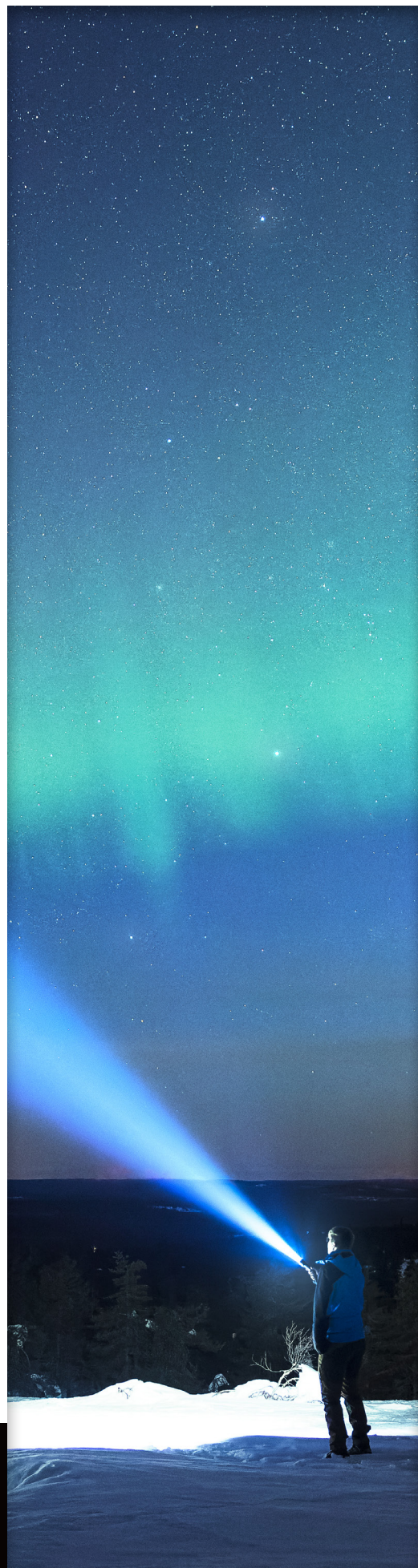
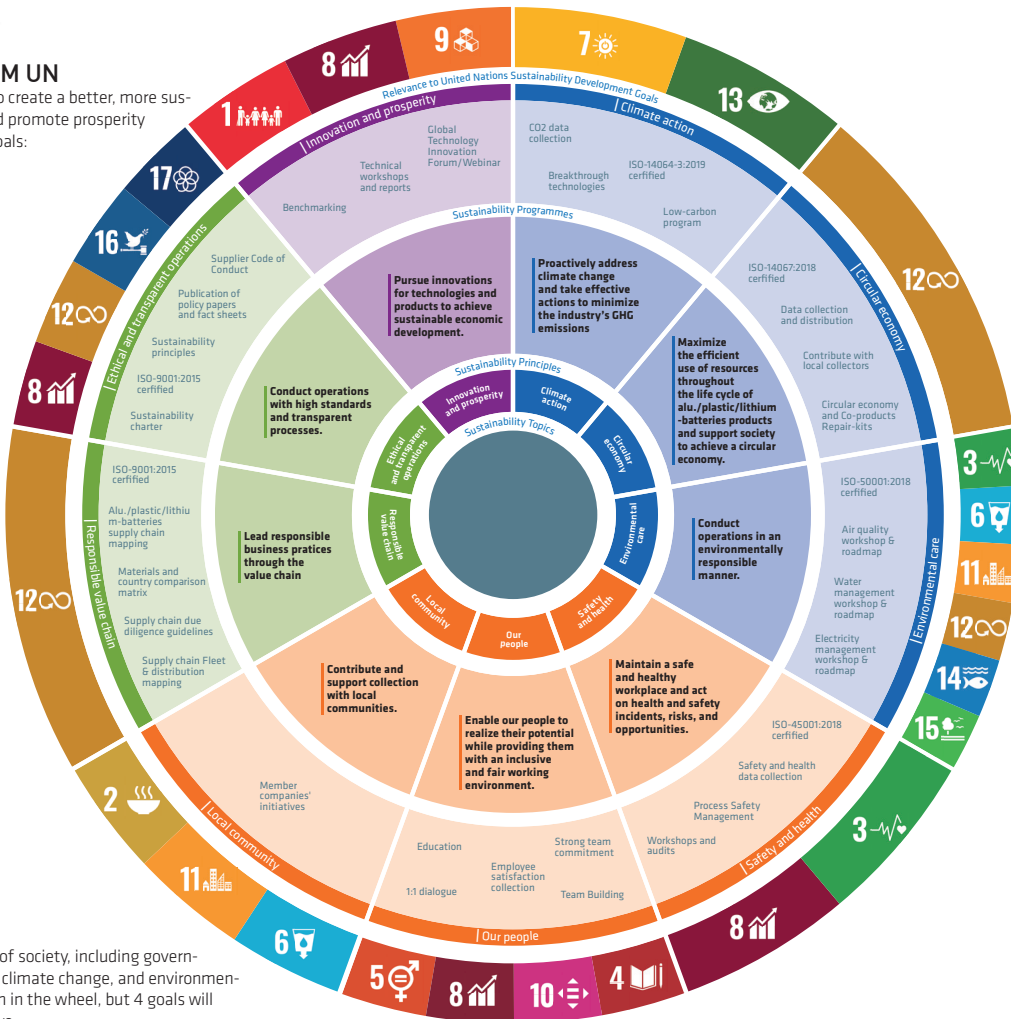
All technical data and information are subject to change.
Please notice that the presented pictures may differ from the final sales material.
P/N : 006.0038



Suprabeam is manufactured by the Steiner Group and distributed worldwide by:

Suprabeam A/S
Dyssen 3
DK-8200 Aarhus N, Denmark
Phone: +45 87 525 212

www.suprabeam.com





SCAN FOR MORE INFO

FLASHLIGHTS



Q1mini



P/N: 501.2011

120
LUMENS

1 x AAA 60 m 10° - 70° 38 g

Q1



P/N: 501.3011

160
LUMENS

2 x AAA 70 m 10° - 70° 56 g

Q1 TRUE COLOR



P/N: 501.4011

160
LUMENS

2 x AAA 50 m 20° - 70° 56 g

Q1r



P/N: 501.2011

550
LUMENS

Li-Po 720 mAh 100 m 20° - 70° 48 g

Q2



P/N: 502.1011

200
LUMENS

1 x AA 150 m 10° - 70° 80 g

Q2xr



P/N: 502.6011

800
LUMENS

Li-Po 1100 mAh 175 m 10° - 70° 67 g

Q3classic



P/N: 503.1511

330
LUMENS

3 x AAA 210 m 10° 96 g

Q3



P/N: 503.1111

380
LUMENS

3 x AAA 230 m 10° - 70° 99 g

Q3r



P/N: 503.5311

1100
LUMENS

Li-Ion 3000 mAh 200 m 15° - 70° 130 g

Q4



P/N: 504.1011

400
LUMENS

3 x AAA 200 m 10° - 70° 152 g

Q5xrs defend



P/N: 505.7111

2000
LUMENS

Li-Ion 9000 mAh 360 m 10° - 70° 182 g

Q7xrs



P/N: 507.6311

4200
LUMENS

Li-Ion 5000 mAh 440 m 15° - 75° 297 g

The Story of SUPRABEAM



The Suprabeam Headquarter

The Suprabeam headquarter and warehouse are located in Aarhus, Denmark, situated scenically on a hill overlooking the city of Aarhus and the bay. Our headquarter houses R&D, main sales team, marketing, and warehouse staff.

How it All Began

Twenty years ago, SUPRABEAM was born out of a simple yet ambitious vision: To create the best lighting solutions for professionals. Our Swiss founder, René Steiner, with his roots in precision optics and electronics, set out to craft products that must deliver unmatched performance.

CELEBRATING
20 YEARS OF
ILLUMINATION

20 YEARS
suprabeam



Danish Design | Swiss Engineering

Our commitment to excellence is deeply rooted in the synergy of Danish design and Swiss engineering. Danish design is celebrated for its simplicity, functionality, and elegance. Values that guide us in creating products that are not only powerful, but also intuitive and aesthetically pleasing. Swiss engineering is celebrated for being the peak in precision and durability. This ensures that our products are built to perform and function flawlessly, even in the most demanding environments.

Own Factory

In our factory, we follow the strict ISO 9001 standards and we are always striving for perfection. We make several tests and thorough quality control during production. This ensures the same high quality of all products leaving the factory.



SCAN FOR MORE INFO

HEADLAMPS



V3air



P/N: 610.1011

340
LUMENS

3 x AAA 195 m 10° - 70° 140 g

V3air rechargeable



P/N: 610.5211

650
LUMENS

Li-Po 1400 mAh 210 m 10° - 70° 148 g

V3pro rechargeable



P/N: 612.5211

1000
LUMENS

Li-Po 2800 mAh 245 m 10° - 70° 184 g

V4pro rechargeable



P/N: 613.5211

1000
LUMENS

Li-Po 2800 mAh 250 m 10° / 35° 195 g

S2



P/N: 602.1011

300
LUMENS

3 x AAA 85 m 20° / 60° 116 g

S4 rechargeable



P/N: 604.5011

750
LUMENS

Li-Po 1400 mAh 100 m 20° / 60° 136 g



SCAN FOR MORE INFO

MULTILAMPS



M6r



P/N: 526.5111

1100
LUMENS

Li-Ion 3000 mAh 105 m 20° / 60° 111 g

M6xr



P/N: 526.6111

2000
LUMENS

Li-Ion 3000 mAh 165 m 30° / 70° 114 g

M6xr DEFEND



P/N: 526.7111

2000
LUMENS

Li-Po 3000 mAh 165 m 30° / 70° 114 g

B6r



P/N: 302.1101

4200
LUMENS

Li-Po 36 Wh 230 m 30° / 70° 480 g

B6r



P/N: 302.1102

4200
LUMENS

Li-Po 72 Wh 230 m 30° / 70° 727 g